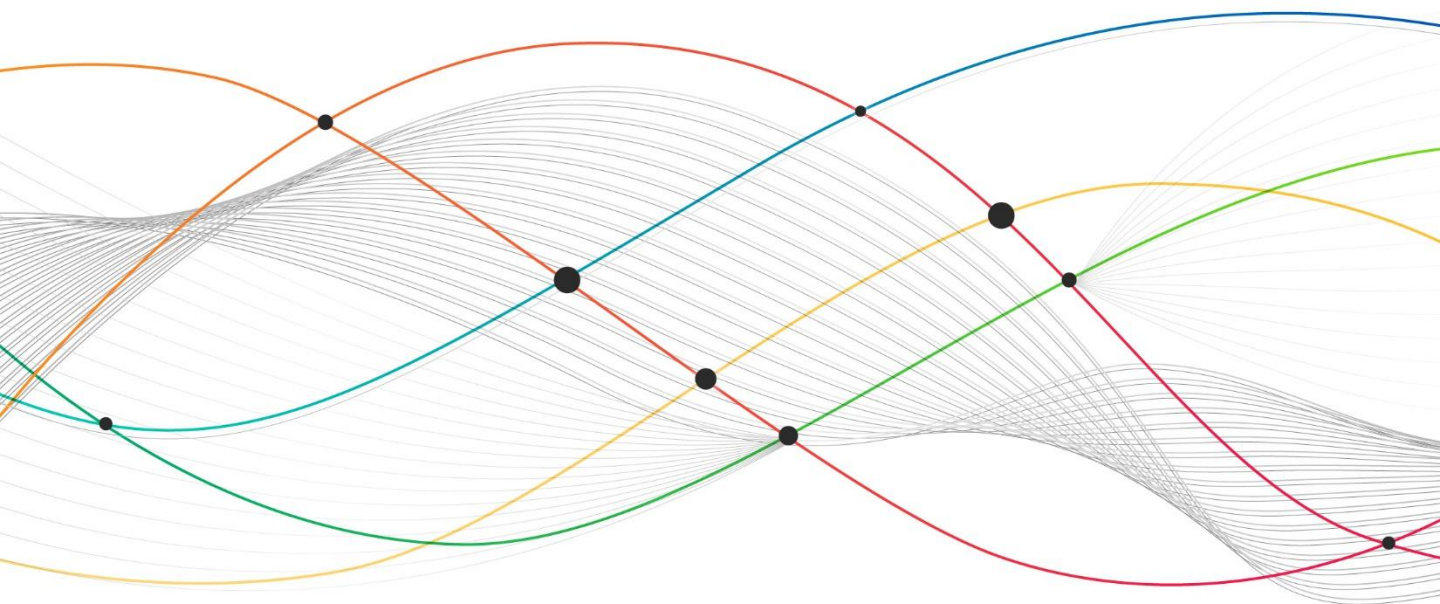


Product Specification

Micro LED - Smart Media Display

P125-45S



Version: V1.1

Smart Media Display
smartmediadisplay.cn
info@smartmediadisplay.cn
Shenzhen XiaoMing Trading Co.Ltd



Product review

Is developed for the indoor LED display market, ideal for commercial plazas, urban lighting, public service ads, smart cities, museums, and creative centers.

Product Features

- **Low Power Consumption:** Common cathode design for energy efficiency, high refresh rate, HDR dynamic display, and 16-bit grayscale at low brightness.
- **High Protection:** Fully encapsulated COB integration offers high protection, reliability, and environmental adaptability.
- **High Precision:** Die-cast aluminum cabinet with CNC precision machining, unique front connectors, and floating connectors to eliminate gaps and ensure flatness.
- **Easy Maintenance:** Full front maintenance, featuring hot-swappable modules, and overall rigid connection.

Technical Parameters Table

Name	Category	P125-45S
Module Parameters	Pixel Structure	COB
	Pixel Pitch (mm)	1,25
	Number of Scan	45S
	LED type	MINI Chip LED 4*7mil
Cabinet Parameters	Unit Composition (W×H)	4*2
	Cabinet Size (mm)	600x337.5x30
	Cabinet Resolution (W×H)	480*270
	Area (m ²)	0.2025
	Pixel Density (Dots/m ²)	640 000
	Material	Die-cast Aluminum
	Cabinet Weight (kg)	4.7
	Cabinet Flatness (mm)	≤0.1
Optical Parameters	Brightness (nits)	0-1200 (adjustable)
	Color Temperature (K)	2000~12000 (adjustable)
	Viewing Angle(H/V)	160°/140°
	Luminous Point Center Distance Deviation	<3%
	Brightness Uniformity	≥98%
	Chromaticity Uniformity	Within±0.0035 Cx,Cy
	Contrast Ratio	30000: 1
Electrical Parameters	Peak Power Consumption(W/m ²)	310
	Average Power Consumption(W/m ²)	150
	Power Supply Requirements	AC100~240V (50~60Hz)
	Max Heat Dissipation(BTU/m ² /H)	760
	Average Heat Dissipation(BTU/m ² /H)	305
Processing Performance	Driving Method	Constant Current Drive
	Frame Rate (Hz)	50/60
	Image Refresh Rate (Hz)	3840
	Gray Level (bit)	13~22
Application Parameters	Operating Temperature (°C)	-10~+45
	Operating Humidity	10%~90%RH non-condensing
	Service Life (H)	100,000
	Maintenance Method	Full Front Maintenance
	Protection Level	IP41
	Certification Type	CCC, EAC

Note 1: According to customer requirements, different item parameters will be slightly different, and the above parameters are just for reference;

Note 2: Due to the batch nature of product production, there may be a deviation of approximately 5%-10% in terms of brightness, power consumption, and other parameters. The specific parameters are based on actual situation.